

**LEGAL DESCRIPTION**

BEING A PORTION OF THE NORTH HALF OF THE NORTHEAST ONE QUARTER OF SECTION 3, TOWNSHIP 3 SOUTH, RANGE 66 WEST OF THE SIXTH PRINCIPAL MERIDIAN, CITY AND COUNTY OF DENVER, STATE OF COLORADO; BEING MORE PARTICULARLY DESCRIBED AS FOLLOWS:

COMMENCING AT THE NORTH ONE QUARTER CORNER OF SAID SECTION 3; THENCE S00°40'12"W ALONG THE WEST LINE OF THE NORTHEAST ONE-QUARTER OF SECTION 3, A DISTANCE OF 600.29 FEET; THENCE S89°19'48"E, A DISTANCE OF 100.00 FEET TO THE POINT OF BEGINNING; THENCE CONTINUING S89°19'48"E A DISTANCE OF 435.60 FEET; THENCE N00°40'12"E, PARALLEL WITH SAID WEST LINE OF THE NORTHEAST ONE QUARTER, A DISTANCE OF 100.00 FEET; THENCE N89°19'48"W, A DISTANCE OF 435.60 FEET; THENCE S00°40'12"W, A DISTANCE OF 100.00 FEET TO THE POINT OF BEGINNING.

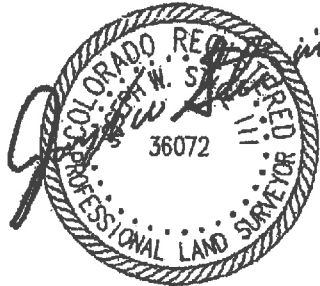
CONTAINING 43,560 SQUARE FEET OR 1.000 ACRES MORE OR LESS.

AS SHOWN ON EXHIBIT "C", MADE ATTACHED HERETO AND MADE A PART HEREOF.

BEARINGS ARE BASED UPON THE WEST LINE OF THE NORTHEAST ONE-QUARTER OF SECTION 3, WHICH BEARS N00°40'12"E, AND IS MONUMENTED ON THE NORTH END OF THE LINE WITH A FOUND 3 ¼ INCH ALLOY CAP STAMPED LS 25379 AND AT THE SOUTH END OF THE LINE WITH A FOUND 3 ¼ INCH ALLOY CAP STAMPED LS 34175.

AUTHORED BY:

JOSEPH W. STICE, III  
PLS 36072  
56 INVERNESS DRIVE EAST  
SUITE 101  
ENGLEWOOD, CO 80112  
720 488-1303



CIC No. 14

PORTION OF THE N1/2, NE1/4  
SECTION 3, T.3S., R.66W., 6TH P.M.

FD 3 1/4" ALLOY CAP  
STAMPED LS #25379  
NORTH 1/4 CORNER  
SECTION 3

NORTH LINE NORTHEAST ONE-QUARTER SECTION 3

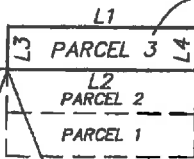
POC

2604.20'

600.29'

S89°19'48"E  
100.00'

43,560 SQ. FT.  
1.000 ACRES



POB

N1/2, NE1/4, SEC. 3,  
T.3S., R.66W., 6TH P.M.



NW1/4, SEC. 3

SOUTH LINE NORTH HALF SECTION 3 (APPROXIMATE)

LINE TABLE		
LINE	LENGTH	BEARING
L1	435.60	N89°19'48"W
L2	435.60	S89°19'48"E
L3	100.00	S00°40'12"W
L4	100.00	N00°40'12"E

S1/2, NE1/4, SEC. 3

GRAPHIC SCALE

400 0 200 400



FEET

S00°40'12"W

SOUTH LINE NORTHEAST ONE-QUARTER SECTION 3

FD 3 1/4" ALUMINUM ALLOY CAP  
STAMPED LS #34175  
CENTER 1/4 CORNER  
SECTION 3

**CAL VADA**

**SURVEYING, INC.**

2 OF 2

Job No 04251